



# SAE NEWSLETTER

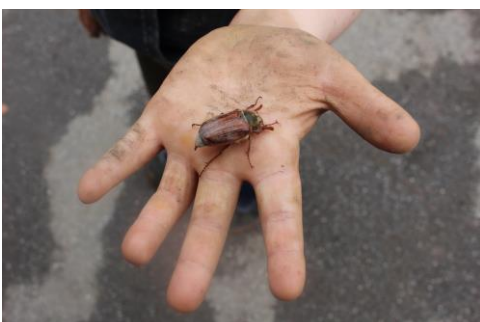
ISSUE NO 117 7<sup>TH</sup> JUNE 2019

## DATES FOR YOUR DIARY

Tues 11 <sup>th</sup> June	Whitsun assembly children encouraged to wear white
Tues 11 <sup>th</sup> June	Bicton college visiting class 8 and 9
Thurs 13 <sup>th</sup> June 16.00 - 18.00	Class 3 1-1 parent meetings please book on Arbor
Fri 14 <sup>th</sup> June 10 - 12	Open morning for prospective parents
Fri 14 <sup>th</sup> June	GCSE's finish
Sat 15 <sup>th</sup> June	Summer Fayre

Thurs 20 <sup>th</sup> - Fri 21 <sup>st</sup> June	Class 8 Ultimate Adventure trip
Thurs 20 <sup>th</sup> June	Class 10 leaving assembly and BBQ
Fri 21 <sup>st</sup> June time to be confirmed	St John's celebration
Wed 26 <sup>th</sup> - Sat 29 <sup>th</sup> June	Class 5 Olympics
Thurs 27 <sup>th</sup> June	Class 1 beach trip

## OUR WEEK IN PHOTO'S



## CHERRY TREE NEWS



Cherry Tree are celebrating Whitsun today. The children have taken care creating beautiful decorations over the past few weeks for our special day.



## GENTLE SAFEGUARDING REMINDER

Please could all parents/ carers be mindful as to what your child may be bringing into school. We have had adult size (and very sharp) scissors, medications and tablets and aerosol sprays which can be highly dangerous for asthmatics as well as being dangerous if squirted into eyes.

## BODY POSITIVE WEEK

Next Wednesday 12th June we will be launching Body positive week.

Our staff have been trained to deliver the PANTS program (NSPCC) to Kindergarten, Lower and Middle school. Upper school will be looking at Consent with help from the "Tea video" and healthy relationships.

Also with help from the school nurse..we will be talking to the girls in both class 7s about Periods, sanitary products and keeping clean. This will be on Tuesday 11th June.

The school nurse will also be talking to the girls in both class 6s on Thursday 27th June.

The boys will also have the talk with a male member of staff.

If you don't wish for your child to be involved then please let us know by Tuesday 11th June.

<https://www.thamesvalley.police.uk/police-forces/thames-valley-police/areas/c/2017/consent-is-everything/>

<https://www.nspcc.org.uk/preventing-abuse/keeping-children-safe/underwear-rule/>

## GRAND OPENING OF THE KILN!



## CONGRATULATIONS...

George has recently passed his ABRSM Grade 3 Piano exam with a distinction awarded (a mark over 87%). He has been coached by Lizzie Kirwan for many terms and she certainly deserves some recognition as does George.



Regional Schools Commissioner, with details of the decision.

We are delighted that there is now a clear direction for the future of the schools, building on Avanti's successful approach to school improvement, whilst working to combine the Steiner-Waldorf principles. .

The next phase will include an active consultation period with parents and staff, led by the Avanti team. We are sure that there are many questions, but hope that this decision allows us to begin the next phase, moving forward as a group of schools, together.

It is important to note that the School Improvement Plans each academy have been working towards, to respond to the Ofsted findings, remain in place, and will continue to be the focus for staff and teachers at all of the academies.

We are grateful to Avanti for their commitment to our schools and are clear that it offers a great opportunity for renewal; to continue to improve the quality of education for the children; and to carry forward the contemporary and authentic vision at the heart of our schools.

Sincerely,

Joss Hayes, Principal, Steiner Academy Bristol  
Paul Hougham, Acting Principal, Steiner Academy Exeter  
Nikki Doughty, Acting Principal, Steiner Academy Frome

## TAKING PHOTOS AT SCHOOL EVENTS

If you attend a school event you will be advised at the beginning if it is appropriate for you to take photos. If you are taking photos please remember;

*"You are welcome to take photos and videos of your children or other family members, but please be sensible with the images of other people's children who may appear in the background. Please do not publish these on social media without the parent's or the \*student's permission, thank you".*

NB. \*the 'student's permission' bit applies to those aged 13+ who are mature enough to provide consent for themselves.

## MESSAGE FROM THE PRINCIPAL

Dear Parents and Staff,

We are pleased to announce that all three Steiner Academies - Bristol, Exeter and Frome - will be transferred together to the Avanti Schools Trust. Please find enclosed a letter from Lisa Mannall,

## PTA NEWS

**SUMMER FAYRE, SATURDAY 15<sup>th</sup> JUNE 11- 3 PM - TAKE PART AND ENJOY!**

Dear All,

We would like to create an extra special Summer Fayre this year, which celebrates our community and its' continuing growth and development.

You can support the Fayre in several ways - though sparing an hour or two in volunteering is especially needed to make the Fayre possible:

### 1) Donate to Preloved

Drop off clothes and books for the preloved stall to the cabin next to the Ark from 8:45-9.20 each morning or afternoon from 3:45 -4.15 next week (Mon 10th - Fri 14th June)

### 2) Donate to Raffle

Drop off Raffle items at Reception (organic, wholesome items for a hamper including food / drink,

natural soaps, candles. If you have a business, you might like to leave a voucher for the raffle along with some of your marketing material and we can promote it on the welcome / raffle table)

### 3) Promote

Circulate the attached e-flyer to friends and family. We have some wonderful activities lined up including an obstacle course, complimentary therapies, live music, drumming circle, pottery, storytelling, stalls and delicious food (organic BBQ, wood-fired pizza and ice-cream)!

### 4) Food contributions for the cafe

To be left in the hall entrance on Friday at drop off or bought to the fayre on Saturday morning:

Kindergarten and Class 1: Cakes and Biscuits  
Classes 2 -4: Savouries, Quiches, Flans, Bakes  
Classes 5 and up: Salads

Please ensure that all contributions are nut-free and ingredients are labelled.

### 4) Volunteer - many hands make light work!

All of these wonderful activities depend upon volunteers so please spare an hour or more if possible (family and friends are welcome to as well) to sign up to any of the following:

Parking: <https://doodle.com/poll/ttvcatacngstn9w2>

Cafe: <https://doodle.com/poll/tu956z49i683tqqc>

Tearoom: <https://doodle.com/poll/kcfc9w8ckvzn2mi>

Friday night set up from 3:45: <https://doodle.com/poll/uvy62tdx4ux8nv6u>

We look forward to a joyful and well-deserved community gathering with you!

Warm wishes,

PTA Reps

### **\*\*NO PARKING ON WEST GARTH RD OR ADJOINING ROADS ON FAYRE DAY\*\***

We would kindly ask you to respect that there will be no parking on West Garth Road or the adjoining roads on the day of the Fayre. Due to past issues with visitors parking inappropriately we have been advised that future events could be stopped if we aren't mindful of local residents and other traffic.

There will be parking in the layby and the carparks within the school grounds. Johnsons Drycleaners across the road from SAE have generously allowed us to use their facilities on the day too. Alternatively, there is parking on Cowley Bridge Road going towards Cowley and Wrefords Lane on the right-hand side.

We would encourage you to use buses where possible, these run frequently from the City Centre and St David's Station to outside the school.

**SUMMER FAIR**  
Saturday 15th June  
11am – 3pm

**FREE ENTRY**

Activities include an obstacle course, complimentary therapies, storytelling, drumming circle, natural crafts, stalls, wood-fired pizza, bbq and local ice-cream!

Thomas Hall, Cowley Bridge Rd. Exeter

 SteinerAcademyExeter